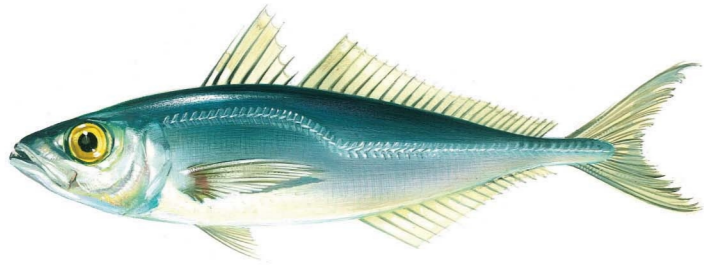


30 Principales Especies Pesqueras de Interés Comercial



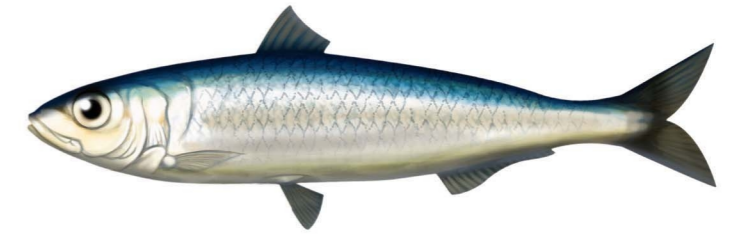
JUREL
Trachurus trachurus



CABALLA
Scomber scombrus



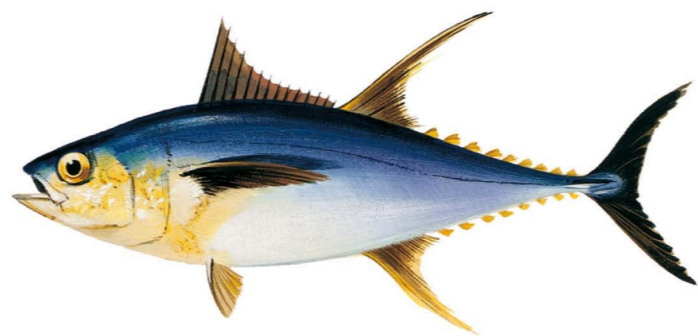
MERLUZA o MERLUZA EUROPEA
Merluccius merluccius



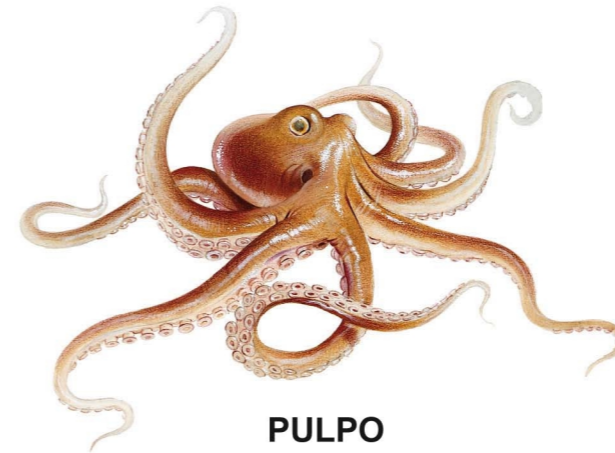
SARDINA
Sardina pilchardus



BOQUERÓN o ANCHOA
Engraulis encrasicolus



RABIL o ATÚN DE ALETA AMARILLA
Thunnus albacares



PULPO
Octopus vulgaris



RAPE BLANCO
Lophius piscatorius



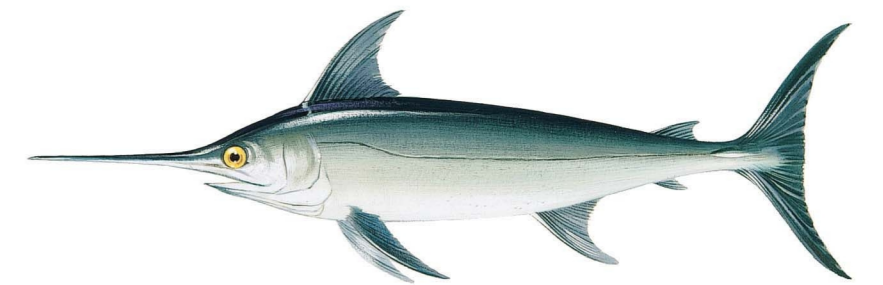
POTA
Illex illecebrosus



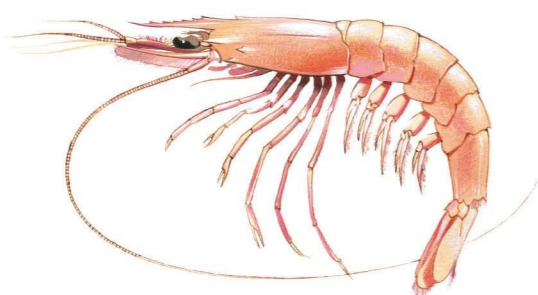
CHIRLA
Chamelea gallina



ALMEJA FINA
Ruditapes decussatus



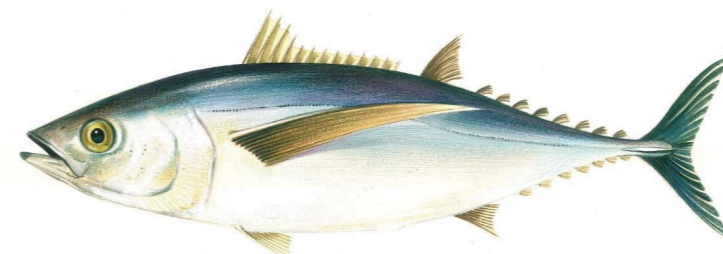
PEZ ESPADA o EMPERADOR
Xiphias gladius



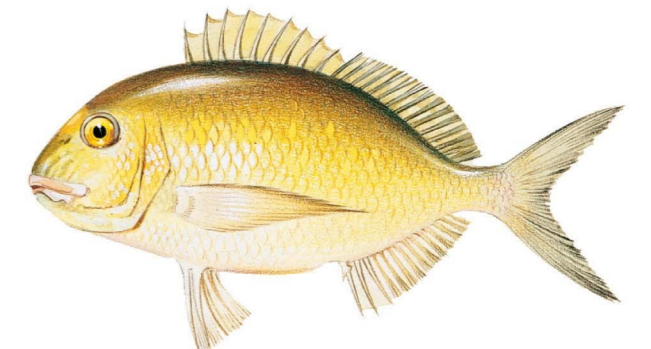
GAMBA BLANCA o DE ALTURA
Parapenaeus longirostris



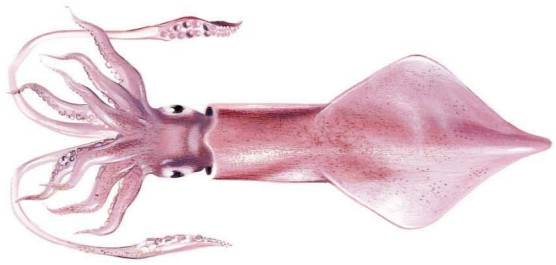
CIGALA
Nephrops norvegicus



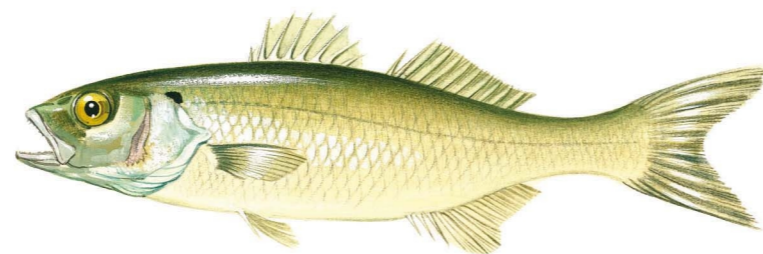
BONITO DEL NORTE o ATÚN BLANCO o ALBACORA
Thunnus alalunga



DORADA
Sparus aurata



CALAMAR EUROPEO o CALAMAR
Loligo vulgaris



LUBINA o RÓBALO
Dicentrarchus labrax



BESUGO
Pagellus bogaraveo



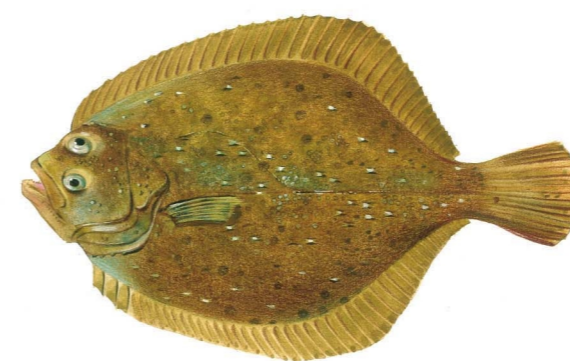
BACALAO
Gadus morhua



MEJILLÓN
Mytilus galloprovincialis



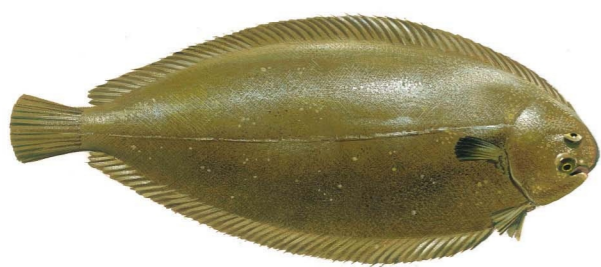
TRUCHA ARCO IRIS
Oncorhynchus mykiss



RODABALLO
Scophthalmus maximus / Psetta maxima



GALLO
Lepidorhombus boscii



LENGÜADO EUROPEO
Solea solea



BACALADILLA
Micromesistius poutassou



SEPIA, CHOCO o JIBIA
Sepia officinalis



CONGRIO
Conger conger

LANGOSTINO MEDITERRÁNEO
Melicertus (Penaeus) kherathurus



SALMONETE DE ROCA
Mullus surmuletus

